



Herefordshire Federation of Women's Institutes

theWI
INSPIRING WOMEN

OCTOBER NEWSLETTER



CIRENCESTER & SNOWDROPS AT CERNEY HOUSE



MONDAY 12TH FEBRUARY 2024

Cost for Coach & Entrance: £32.00 per person (includes Cerney House entrance, history & refreshments)

Time & Pick-up Points:
LEOMINSTER 8.00am Broad Street Car Park, Leominster (HR6 8DD)
HEREFORD 8.30am Bus Station, Commercial Road, Hereford (HR1 2EP)
LEDBURY 9.00am Market Hall, High Street, Ledbury (HR8 1DH)

Return Time: Leaving Cerney House at 3.00pm

Details: Enjoy free time to explore Cirencester – for lunch and shopping and maybe visit one of the many antique or independent shops. Then the trip moves onto Cerney House and the snowdrop trail. Cerney House was built in approximately 1660 by the Rich family and occupied until 1772. The trip includes your entrance fee, an introduction and short history. The Snowdrop trail meanders through the borders and into the walled garden. We finish our visit with tea/coffee and cake in the Bothy (included in the price).

The trip will be open to EVERYONE, so do bring a friend.

Closing date: Thursday, 18th January 2024



The **September 2023** draw has been made and the lucky winners are:

1st Prize (£20) Ticket no 16
(Munsley WI member)

2nd Prize (£10) Ticket no 26
(Preston Wynne WI member)

3rd Prize (£5) Ticket no 10 (Stoke Prior & District WI member)

YOU can still join the HFWI 100 Club

For details contact:
admin@herefordshirewi.org.uk

WE WILL BE CLOSED ON....

Advance notice—WI House will be closed on 28 & 29 September due to staff annual leave.

GOOD BYE

Many of you will have been informed that **Alison Lord and Cherril Watkins**, who are both Advisors and Trustees, are resigning at the end of December. They have done a great deal for the Federation and for individual WIs for which we give them both many thanks. Joy Edwards will continue as Advisor to her groups of WIs. The very successful monthly Coffee Mornings were started by the Advisors. These will continue, so do watch the Newsletters for future venues. Should you need any further information or advice, do contact WI House for any help required.



WI OFFICERS COFFEE & CATCH UP

Join us at 10.30am at:

Pengethley Garden Centre, HR9 6LL **Saturday 14 October**

The Hop Pocket, WR6 5BT **Friday 10 November**

Durham in the Spring

Sunday 14th April 2024 for 5 days

This tour encompasses the beautiful scenery of the Ards Peninsula, the spectacular Antrim Coast and the highlights of Belfast city including the impressive Titanic Visitor Centre.

Beamish Open Air Museum & a beach

Beamish is a world famous open air museum which brings the history of North East England to life from the 1820s to the 1950s. We then visit Seaham, the lively harbour town on Durham's Heritage Coast.

Durham

Durham Cathedral and Castle have been designated a UNESCO World Heritage Site and dominate the riverside. Explore the delightful, cobbled streets, the wonderful shops or sit and relax in one of the many cafes.

Return to the hotel where the remainder of the day will be at leisure to relax and make the most of the wonderful facilities at the hotel.

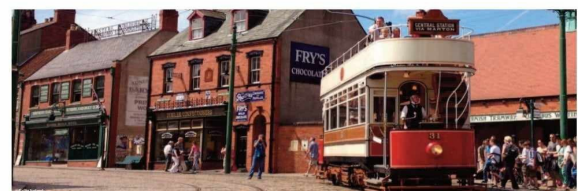
Barnard Castle & Bowes Museum

This historic market town takes its name from the castle around which it grew. Home to many antique shops, independent stores and delightful cafes. The Bowes Museum is housed in a gorgeous French style chateau, with a superb collection within.

Cost
£590
per person

Your tour includes

- Coach and Concierge for the duration
- 4 nights Dinner, Bed & Breakfast
- Four choice three course dinner with coffee
- All admission fees to attractions (listed)
- Portage
- Free WiFi throughout the hotel
- Use of the Leisure Club
- 15 Single rooms without a supplement
- £160 Double room for Single Occupancy
- 10 Twin/Double rooms



To book, fill in and return the form overleaf..

rural concierge

© Herefordshire Federation of WIs

Website: <https://herefordshire.thewi.org.uk/>

HFWI Office is located at WI House, 90 St Owen's Street, Hereford, HR1 2QD. Office hours: Tuesday-Friday 9.30am-2.30pm. Telephone number: 01432 272268.

WI House Team: Chairman—Margaret Simcock (chair@herefordshirewi.org.uk); Federation Secretary—Caroline Wright (fedsec@herefordshirewi.org.uk); Accountant—Marcia Brown (accounts@herefordshirewi.org.uk); Assistant Federation Secretary—Caroline Miller (admin@herefordshirewi.org.uk)



Poem of the month taken from one of the entries for the Joy Ward Silver Trophy Poetry Entry 2023

From a Distance by Mary Burgess, Holmer WI

Our World is an enigma, yes in all its forms,
From a distance, a globe of peace.
You cannot see the damage done, but now: -
A time to pause, a time to cease
From the highest to the low
To make the Earth regrow
Must work together constantly
To return the World we know.



From a distance the land is clearly defined
Up close the boundaries are blurred.
Wars, neglect, ignorance and greed together
- maps the route to what occurred.
From the highest to the low
They must be made to know.
Education and life changes
- will return the World we know.

WEOBLEY CRAFT & FOOD FAIR

Weobley WI and the Village Hall Committee are holding a craft and food fair

Sunday 19th November 10am-3pm
Hopelands Village Hall
8 Gadbridge Road
Weobley HR4 8RZ

Comprehensive variety of craft and food stalls
Raffle / Light refreshments
Entry £1 (children free)

Parking available at hall or in Bell Square



MARGERET'S MEMO

Autumn is here! Let us hope that we enjoy a beautiful, sunny season to make up for the rather in-different summer. We are looking forward to visiting Westonbirt Arboretum on 30th October when the trees should be spectacular in their autumn colours. There is also the visit to Stratford on 7th December. Book quickly for both either through your WI or by contacting the office – admin@herefordshriewi.org.uk – and remember to bring a friend. Before these events, I will be meeting many of you at the Annual Council Meeting at Ledbury on 17th October when we shall enjoy the speakers before meeting friends over the buffet lunch.



Many thanks to all who helped to make WI Day such a success. What a wonderful number of items in the Competitions which exhibited your wide-ranging, fantastic skills. Thank you for all the work that went towards making the stalls so varied and inviting. I am sure that many of you found the clean rivers display fascinating and will be completing the survey on a waterway near to you.

The next event when you can raise funds for your WI is the Yule Fayre on Saturday, 25th November. A table is just £5 with the rest of your takings going to your WI so apply now for a table. This is a great opportunity as everyone will be looking for Christmas gifts.

I am sure that by the end of October we shall all begin to think of Christmas with seasonal songs on the radio all day. I do wish that I could remember all the words to The Twelve Days of Christmas!!

Best wishes to all, Margaret

HFWI Events Please apply for tickets through your Secretary/Treasurer/Booking Person. (Associate members may book direct with the HFWI office.) BACS or cheque payments shown on your bank statements will act as receipt of monies received by HFWI. Receipts will be issued for cash transactions. If the word 'non-members' is not printed on the application form, the event is for members only. If oversubscribed (too many applications for places received before the closing date), WI members have priority and a ballot may be held. Notification of cancellation or over-subscription will be sent to the Booking Person as soon as possible. If you can't attend, it is up to you to sell your ticket (as appropriate), no refunds are given unless the event cannot go ahead or is over-subscribed. Please note: All events except training are fundraisers for HFWI.



NEWS FROM THE ARCHIVES

Recently while adding items to the WI catalogue I came across some early photographs in a scrapbook put together by Kingstone WI (closed in 2015). As well as an image of the WI's first outing to Barry Island in 1920 (the year after its formation) I was pleased to discover two of the Kemble Theatre stage hosting the HFWI Pageant in 1925 and the Masque in 1928. In addition there was a programme for the 'Masque of Modes and Manners'.

At this point I should note a cardinal error in the dates in the programme – the omission of the year. The dates were quoted as: APRIL 26TH, 27TH AND 28TH, AT 7-30P.M., MATINEES FRIDAY, 27TH, SATURDAY, 28TH, AT 2-30P.M.

This had to be derived from other sources – the inscription on the back of the photograph confirmed the title of the masque and year. The calendar for 1928 confirmed that April 27th and 28th were indeed a Friday and a Saturday respectively.

Archival note - please put the full date in your records including four digits for the year.

The programme shows that different WI groups depicted various periods in history – Romans in Britain, late Anglo Saxon and the eleventh to the nineteenth centuries inclusive. The eighteenth century scene was performed by members of the Executive (equivalent now to the Board of Trustees) and their daughters.

A long list of patrons includes Lady Denman (then NFWI Chairman), the Lord Lieutenant of Herefordshire (Sir John Cotterell, Bt.) and several ladies who were instrumental in the founding of the Federation: Mrs. Arthur W Foster (Alice Foster, the first HFWI Chairman), Mrs. Ord-Capper (first Hon. HFWI Treasurer), and Mrs. Kevill-Davies (first HFWI Hon. Secretary).

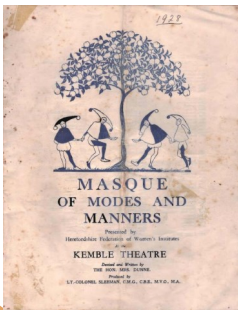
The masque was devised and written by the Hon. Mrs. Daphne Dunne (then HFWI Chairman) and produced by Lt. Colonel Sleeman (then commanding officer of the Herefordshire Regiment).

The Kemble Theatre in Broad Street, Hereford was demolished in 1963. It started life as the Corn Exchange in 1858 but was only used on market days. To bring in extra income a theatre was incorporated until 1911 when a full time theatre was installed in an extended building. The site is now occupied by Kemble House, 36-40 Broad Street.

For more information on HFWI archives and how to look after your WI's records please visit the Herefordshire page on the national WI website: <https://herefordshire.thewi.org.uk/> <https://herefordshire.thewi.org.uk/> then go to About us > Federation Archives.

Please contact me if you have any archive questions or concerns.

Tessa Lovell HFWI.Archivist@gmail.com 01885 788623



HFWI 2025 CALENDAR COMPETITION
HEREFORDSHIRE RIVERBANKS AND WATERWAYS



Hunderton Bridge looking towards St Nicholas Church and Hereford Cathedral

Due to the success of Herefordshire Federation's resolution 'Clean Rivers for People and Wildlife' submitted by Sandra Walker and Christy Crouch it was felt the topic for the 2025 calendar had to be 'Herefordshire Riverbanks and Waterways'.

The picture must show a bit of recognisable Herefordshire in the composition, can be a church or famous landmark in the distance. Look for something 'out of the box', a little bit different not just a standard view of a bridge or a swan or a duck. It does not have to be sentimental but also not too invasive. We are sure you will be inspired by the theme and so will get your phones/cameras out for another successful competition.

There is a cash prize plus the award of the Calendar Cup for the winning photograph, which will go on the front cover of the calendar.

Photographs must be:

- in a digital format, of a minimum 300 dpi, taken in a landscape format, **NOT** portrait. Please do not send images from an office printer as they pixelate. We will not accept any other format. **Remember to turn the date function off.**

Closing Date: 31st JANUARY 2024

Send your entries clearly marked 'Calendar 2025' to Caroline Wright, Federation Secretary, at fedsec@herefordshirewi.org.uk together with:

- Your name, your WI, title of picture and month when taken, also a short description of the arrangement, what attracted you to it and what we are seeing (maximum of 30 words).

Our calendars are posted out all over the world and given as presents so what a lovely way to showcase our photographers and what lies in, on and besides the rivers and waterways of Herefordshire.

Best of luck.

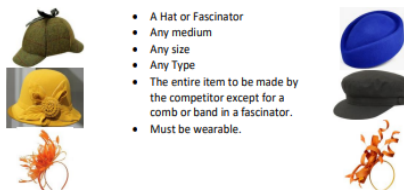


THE EIRA FURLONG CUP
HFWI HANDICRAFT COMPETITION
2024



The Federation is pleased to announce the 2024 Handicraft Competition for the Eira Furlong Cup.

Competitors are asked to make:



- A Hat or Fascinator
- Any medium
- Any size
- Any Type
- The entire item to be made by the competitor except for a comb or band in a fascinator.
- Must be wearable.

Please attached your name, institute and contact details to your entry and send or bring it to WI House by 31st July 2024.

Entries will be displayed on WI Day, Saturday 14th September 2024 at Credenhill Community Hall, HR4 7EB and at HFWI's Annual Council Meeting 2024. Your entry can be collected after the ACM or from WI House.

For further details contact chair@herefordshirewi.org.uk or 01885 400700
Closing Date: 31st JULY 2024





PUBLIC AFFAIRS & CAMPAIGNS

We have decided to celebrate British Science Week in 2024. This event takes place between **8 March and 17 March**. It is coordinated by the British Science Association. Next year is the 30th anniversary so the theme is 'Time'. End Plastic Soup; Thinking Differently; See the Signs; Make a Match; Clean Rivers; - so many of our current campaigns have science at the heart whether medical or environmental and scientific innovations are also intertwined with time.



Questions: What events can we do here in Herefordshire?

Where can we visit to see science, technology, engineering and maths (STEM) in action?

Which other groups could we work with—Wildlife Trust, Healthwatch, National Farmers, all the River organisations etc.?

We plan to begin with a **meal on 8 March to celebrate International Women's Day**. The theme for this day in 2024 is 'DigitALL: Innovation and technology for gender equality'. A great link to the theme 'Time'.

More information about this to follow.

Please show your interest to help organise or suggest an event by contacting via email or phone Sandra Walker 01432 830019 sjwalker253@gmail.com



DIGITAL NEWS—DID YOU KNOW...?

*Herefordshire has its own section on the NFWI website. You can access the Herefordshire pages at this address: <https://herefordshire.thewi.org.uk>

*In the 'Find a WI' section, you can have an extra page for your programme.

*Herefordshire also has a Facebook page where your WI can advertise upcoming events, and see upcoming Federation Events plus HFWI news.

*Have you investigated MyWI? It holds lots of documents about how to run your WI including the WI Handbook.

*WI Training is accessed by the same log in details as My WI and you will find a section for treasurers among other articles.

*Have you been on a Federation trip? Send in your photos!

MSC REPRESENTATIVES - DID YOU KNOW...?

*It's up to you to keep your WIs details up to date on the MCS database. Especially if you change officers, email addresses, meeting time, day, venue or anything else.

*This is the only way that the website page 'Find a WI' will be updated.

Please get in touch if you need any assistance.

Alison Lord digitalchampion.hfwi@gmail.com 01544 340256 07896888629

Check out the National Federation of Womens' Institutes at: <https://www.thewi.org.uk/>



WI FORUM

PC William Sneddon attended **Stoke Prior & District WI's** August meeting to give a very informative talk on Cyber Crime. Members and visitors were brought up to date with this problem. There was lots of interaction between the members and William and everyone agreed they were going home with more confidence with dealing with the phone calls.

Weobley WI has donated a bench to the Weobley Wildlife Meadow which is managed by the Herefordshire Wildlife Trust. Some members of the committee attended a nature walk on the day of installation which was conducted by HWT.



On what was probably the warmest evening of the year (it certainly felt like it!), **Cradley WI** welcomed Kirsty Dunstall, a Pilates instructor, as their so talking about the history and development of paces. Pilates (originally called Contrology - you can't you!) is a series of exercises designed to Pilates himself was interred on the Isle of Man had been a most enjoyable evening.



Speaker. Kirsty spent 20 minutes or Pilates before taking us through our can see why that didn't catch on strengthen the core, devised while during WW1. We all agreed that it

Bosbury WI welcomed Debbie Barber, a professional gardener, in 'Autumn in the Garden'. We were entertained by a set of inspirational photographs showing the wide range of colours and forms that can be created to enhance our gardens in Autumn. The evening finished with a garden photo competition and social time.

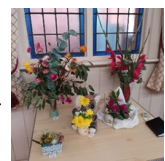
On speaker Industry, ing by the cluding



Wednesday 6 September, **Holmer WI's** talk was Kylie Gaze, who spoke on the history of The in Australia – up until the present day. From the local Aborigines, to the modern equipment and Health and Safety issues. The talk was accom- ous slides, showing the terrain around Bloom, general photographs related to of course several of the pearls themselves. The competition for the evening was a flower arrangement, related to Australia, and the entries were very colourful and varied – with ty of Koalas involved. This was won by Jackie, with Mary in second place and



given by guest Bloom Pearl primitive div- methods in pan- by vari- the talk, and plen- Sue in third.



A wonderful powerpoint presentation was given to **Stoke Prior & District WI** Roads by Gisela Lehmann. Members and visitors were amazed to discover the livestock, which included cattle, sheep and fowls could be walked in order sold. The drover was also responsible for any payments along the journey to- with collecting the sale money and returning it to the relevant owners.



on The Old Drover how far to be gether



Saltmarsh & District WI - The Salties welcomed The Rev Penny Littlewood a now retired vicar but still with P T O (that's permission to officiate and not an instruction to turn over the page) in September who entertained us to a childhood in the small village of Eridge, East Sussex where her father was a groom in the household of the Marquis of Abergavenny. Penny gave us many details of her childhood and it all painted a wonderful picture. We sang Happy Birthday to our member Jean G, Rachel won our net D our competition which was a piece of Victoriana.

Sparkling Wye WI's September had a very sociable meeting, you've heard of speed was speed chatting. Tables of 4 given topics had 5 minutes per topic for each person words... 'hobbies', 'family', 'favourite book', etc, one from each table then moved table. This proved fun and enjoyable way of learning more about fellow Alongside this, members were cutting out fabric silhouettes of their hands for freshments were served and the raffle was drawn to close the evening. The sized group of members from **Sparkling Wye and Peterstow WIs** gathered for of the River Action Week and to coincide with NFWI's 'Clean Rivers for People They joined with members of **Upton Bishop WI** who had decorated pebbles in line with the Clean Rivers theme and had placed them in prominent posi- the Wye in Ross-on-Wye. The 3 WIs met for a drink afterwards. Some mem- WI Rivers Survey.



Raffle and Ja-

dating? This to say a few onto another members.



a Christmas project. Re- following evening a good a riverside litter pick as part and Wildlife' campaign. with inspirational slogans tions along the banks of bers took part in the HWT



A "What's on in Weobley" afternoon was held in the village hall on Saturday 16 September at which all the clubs, societies and groups in Weobley had a stall to promote their various activities. Weobley WI took part and, judging by the interest shown by members of the public, we hope to attract some new members.

Articles for the Forum should be sent to HFWI.News@gmail.com on or before 15th of the month.



HEREFORDSHIRE FEDERATION WI | DIARY OF EVENTS | OCT 2023-FEB 2024

DATE	EVENT	INFORMATION & VENUE	TIME	COST
28 & 29 Sept	Notice of closure	WI House closed	Both days	
1-3 October	WI Holiday	A Right Royal Visit to London	With Rural Concierge	£340.00pp
Sat 7 th October	Informal Meeting	<u>Munsley</u> WI Hall, HR8 2RA. Discussing the future for the Hall	2.00pm	
Sat 14 th October	WI Officers Coffee & Catch-up	<u>Pengethley</u> Garden Centre, Peterstow, HR9 6LL	10.30am	
Tues 17 th Oct	HFWI 102 nd ACM	Ledbury Rugby Club	10.00-1.00pm	Entrance £5pp ACM & Buffet lunch £15pp (to be pre-booked)
28 th October	Coach Trip	Westonbirt Arboretum	Day trip	£36 (coach & entry)
Mon 30 th October	Half-Term Craft Workshop	<u>Munsley</u> WI Hall, HR8 2RA	10am-12 1.00-3pm	£5 entry (incl 1 adult with 1 child)
Tues 7 th November	Coach Trip	Stratford Upon Avon	Day trip	£20 plus optional town tour (£8)
Fri 10 th Nov	WI Officers Coffee & Catch-up	The Hop Pocket, WR6 5BT	10.30am	
Sun, 19 th Nov	<u>Weobley</u> Craft & Food Fair	<u>Hopelands</u> Village Hall, HR4 8RZ	10am-3.00pm	Entry £1, children free
Sat, 25 th November	Yule Fayre	Bodenham Village Hall WI Stalls available	10am-3.00pm	£5.00 per table
Weds 29 th November	Cardiff Christmas Market	Coach trip organised by Cradley WI	All day	£20pp – see advert for contact and details
Sat, 9 th Dec	WI Officers Coffee & Catch-up	Wellington Garden Centre	10.30am	
Mon 12 th Feb 2024	Coach Trip	Cirencester & Snowdrops at Cerney House	Day trip	£32 includes coach, entrance, talk and refreshments

For more details email: admin@herefordshirewi.org.uk

© Herefordshire Federation of WIs. Unauthorised reproduction prohibited. HFWI Newsletter proof-reader: Margaret Simcock. HFWI Newsletter is the official newsletter of the Herefordshire Federation of WIs. By submitting an article for inclusion in this HFWI Newsletter you are giving permission for all of the information and photographs included in the article to be published and distributed to subscribers to the newsletter. The newsletter is also used to help promote the aims and objectives of the Women's Institute therefore it can be read by members of the general public. It is your responsibility to ensure that members included in any article that is sent to us have given permission for their data to be used. No article may be reproduced in any form save with the permission of the Trustees.