



Herefordshire Newsletter

July 2026



Federation of Women's Institutes

CHATTER FROM THE CHAIR



As the song says "June was bursting out all over" and so it seemed at the Three Counties Show, bursting with animals and people. We provided hospitality to the Livestock Judges and Stewards am the Shearing Teams and then opened to the public. The first breakfast baps were served by 6.30 but by then many of the exhibitors had already popped in for the first tea of coffee of the day, or in the case of one little boy his hot chocolate. Our small team worked tirelessly to provide first rate hospitality. There was lots of laughter and it was lovely to meet up with old friends. So thank you to everyone who provided cakes and volunteered to help which made it a great success.

July starts with a bang with the Quiz so I hope to see lots of you at the heats or the final at Munsley on the 10th July. This is quickly followed by me opening my garden in aid of St Michaels Hospice and Herefordshire WI. WI members are providing the hospitality in the form of cream tea on the village green. Herefordshire WI will receive a percentage of the funds for the hospitality with the majority of all funds going to the hospice. So please support this great cause – **Sunday 26th July 11-4, Castle Moat House, Dilwyn, HR4 8HZ** you will find the advert on the back of the newsletter.

HFWI COFFEE & CHAT

Our next meeting is:

**Saturday 18th July @
Wellington Home & Gardens
HR4 8BB**



ARE YOU A WINNER?

The **JUNE** 2026 draw lucky winners are:

1st Prize (£20) Ticket No **5** Preston Wynne WI

2nd Prize (£10) Ticket No **11** Marden WI

3rd Prize (£5) Ticket No **23** Saltmarshe & District

GET YOUR QUIZ TEAMS READY

HFWI Quiz 1st Round

Friday 3rd July

Venues: Munsley, Dilwyn, Withington & Bridstow



THE BIG DRAW

Start date—21st May (At the ACM)

Tickets—£1.00 Each in books of 5

Winners Announced at Autumn Show

Amazing prizes can be viewed on

<https://herefordshire.thewi.org.uk/>

Herefordshire Federation Updates

Three Counties Show

A highly successful Three Counties Show, the biggest fund raiser for our county.

It seemed as if everyone came to visit the Friesian Bar, our reputation has been growing for very good local food served with a smile at reasonable prices.



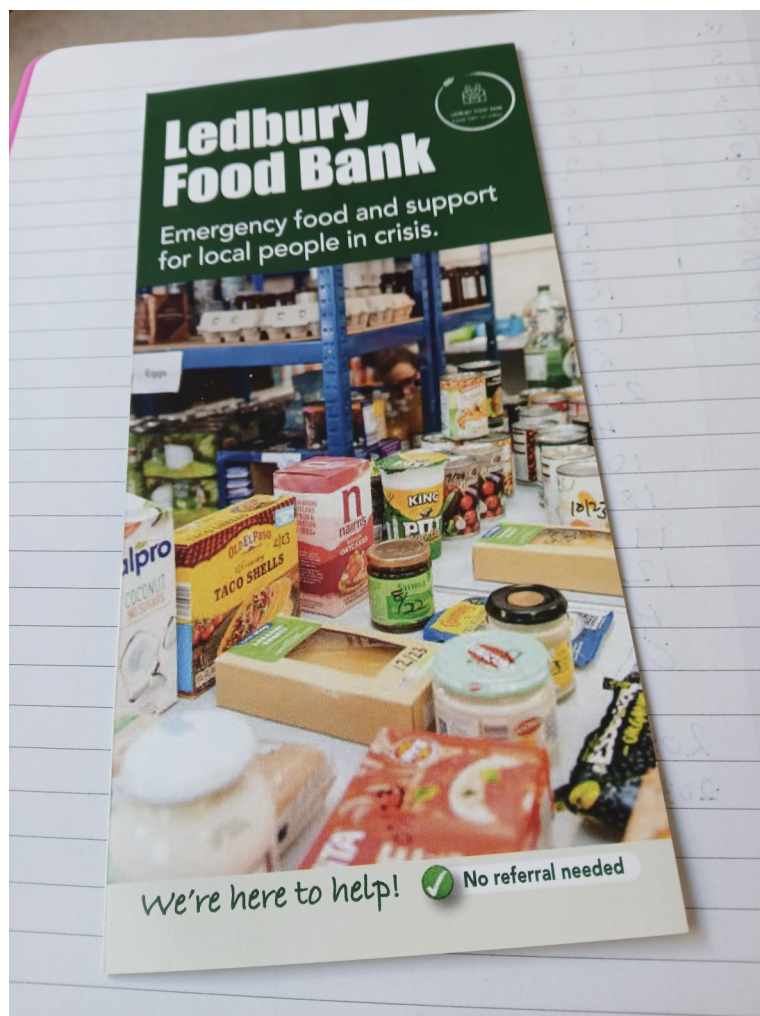
WI FORUM

LEDBURY WI

May's Resolution meeting at Ledbury W.I. was extremely successful, with Jenny Harrison using the presentation material provided by NFWI. There was a definite buzz in the air as members thought about the answers to the quiz, which tested their knowledge of the facts behind the Resolutions works for you. Some were correct and some were incorrect. Jenny then went through the bullet points which were very clear. Members expressed various points of view and experiences on both Resolutions.

NFWI were delighted when they were informed how well received their presentation had been. They commented that this may be the way forward for future Resolutions.

Sue Chopping then gave an informative talk on Ledbury Food Bank. It was interesting to learn not only how fairly food is distributed but how the donations of food customers put into the bins in Supermarkets are dealt with. The two items always in high demand are tinned baked beans and toilet rolls. The Food Bank also offers additional support on a range of issues that contribute to food vulnerability.



WI FORUM

SPARKLING WYE WI

Our June speaker for the evening was Lara Payne a Reflexologist who gave a very interesting presentation. She demonstrated how the body's organs/zones are mapped onto our feet and hands and how, by applying gentle pressure to these parts, a reflexologist can help identify ailments, imbalances within the body and compliment any treatments that the patient is currently undergoing. We must extend our thanks to Maggie Maloney (member) for being the 'volunteer' to have a treatment! Lara kindly gave all members a £10 discount voucher if they wish to have a treatment with her.



STOKE PROR & DISTRICT WI

June Meeting

A very enjoyable evening was had by members and guests as we welcomed **Buffy Nielson** to regale her experiences and life as a **Veterinary Nurse**. She has devoted her career (47 years now retired) to treating and ensuring the best possible outcome for the owner and its pet. She brought along her dog, Ro who was the star of the show and impeccably behaved.

Buffy is involved with the **Charity BSAVA PetSavers** – Funding the future of small animal health. Its aim to help our companion animals live longer, fuller and healthier lives. Any support helps to continue to fund research needed to improve the lives of our pets. For more information go to website bsava.com/petsavers. A good point of reference for anyone thinking of working in a veterinary surgery.

July Meeting

We are pleased that the **internationally renowned Chris Evans and Partner with Herefordshire Wildlife Trust**, is visiting us to give a Powerpoint presentation on Wildlife In the Garden, Tuesday 14th July, Risbury Village Hall 6.30pm.

WI FORUM

BOSBURY WI

In May, Bosbury WI were visited by two members from the Magistrates' Association. They provided a wealth of information about the role of a magistrate as well as challenging us to decide how we would act as a magistrate in a drink driving case. Members gained huge respect for the work of magistrates who are all volunteers and deal with over 90% of criminal cases with the remainder, the more serious cases, being dealt with in the Crown Court. It was an excellent evening and much appreciated by members and visitors.

Later in May we held a very successful plant sale to raise funds for Bosbury WI. A long table was filled with a fine array of plants, including vegetables, bedding plants, border plants and house plants, all grown and donated by members. Gardening advice was offered by WI members serving on the stall and visitors were very appreciative.



BISHOPSWOOD WI

In a one-off move, Bishopswood WI members moved to Goodrich Village hall, and welcomed guests and Alex Knight to Bishopswood WI 107th birthday party. Alex, a former Goodrich Castle guide, gave us a wonderful afternoon talk on the history of Goodrich Castle. It was a great way to celebrate April, a new WI year and Bishopswood WI's 107th birthday with cake and a glass of fizz!



Local candle-maker, Tracy Jenkins demonstrated the art of candle making and gave us a fascinating insight into how to effectively burn a candle and gave some warnings about the contents of the expensive shop bought candles that are not good for our health. Tracy allowed us the chance to explore the wonderful scents of her homemade candles, with some purchases now providing each of us with fragrant homes/cars. A bonus of the meeting was welcoming guests to our Bishopswood WI's May meeting and new member Eileen.

BISHOPSWOOD WI

At June's meeting members were treated to a very special demonstration. Barbara and Nicky (BWWI Member) are members of the Malvern Dowisers, and they presented the wonders of dowsing. Various dowsing devices were demonstrated and the method of asking permission to dowse; for a negative response and a positive response. Following establishing the ground rules, many questions could be asked with the dowsing device indicating the answer. A few members were skeptical of dowsing, but all participated in the activity using different devices and were soon converts to the practice. Members were able to check whether foods/drinks suited them, whether items lost were present in the room, where water could be located, where best to position a plant in the garden and much more. Dowsing ceased when Denise bought in an array of wonderful cakes – because no-one wanted to know whether the cake were beneficial to oneself! Nicky and Barbara were able to give a fascinating insight into how they use dowsing and what they have been able to discover. A very interesting and informative meeting. Thank you Nicky and Barbara very much.



ALLENSMORE WI

For our June outing, members enjoyed a visit to the beautiful Old Rectory Gardens at Thruxton. We received a warm welcome and learned about the fascinating history of the Old Rectory before setting off to explore the gardens at our leisure.

The gardens were a delight, with an impressive variety of plants, trees and flowers on display. We were also fortunate to see an abundance of wildlife, including frogs, tadpoles, dragonflies, butterflies and moths, all adding to the charm of the visit.

It was a thoroughly enjoyable afternoon, and we would highly recommend the gardens to anyone looking for a wonderful day out. As always, we rounded off the visit in true WI style with tea and cake.

If you are interested in joining one of our meetings or would like more information on the Allensmore WI please contact Liz at lecount2@hotmail.co.uk



WI FORUM

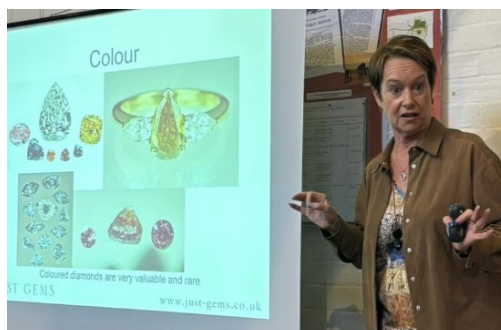
SALTMARSHE & DISTRICT WI

June found us at Ralph Court Gardens enjoying a marvellous Alice in Wonderland Afternoon Tea; tables beautifully set out and arranged, food visually appealing and flavoursome to eat, good company and all to officially celebrate our 80th year. We considered how things have changed from 80 years ago, had a poem read to us by Carol, handed out certificates for those who've had thirty years plus of WI Membership (not just in Saltmarshe, but taken together with elsewhere throughout the UK) and took many photos. We certainly like our social gatherings.



CRADLEY WI

Cradley WI welcomed gemologist and geologist, Helen Plumb from Just Gems to our June meeting. She gave us a fascinating and entertaining talk on how she got started at the age of 5 dismantling her mother's necklaces. From a degree in geology via working on an oil rig in a rather challenging environment to setting up her own business sourcing gems from all over the world, she is now selling gems and jewellery from her shop in Winchcome.



WI FORUM

Colwall WI Celebrates 10 Years of Friendship and Community

Members of Colwall Wings WI gathered at the Colwall Park Hotel last Wednesday to celebrate the group's 10th anniversary.

The special occasion was attended by 39 members and 5 guests and featured a number of highlights reflecting on the organisation's first decade. Display boards showcased memorable events, achievements and activities from the past ten years, giving members an opportunity to look back on the many friendships and experiences shared since the group was founded. These boards are on display at Colwall Library until the end of June.

A particularly special guest was the WI's first President, Jane Stratton, who travelled from Wales, and the first treasurer Sarah Grout who were able to join the celebrations and enjoyed reconnecting with members old and new. Jane and Sarah were integral to the starting up of a local WI in Colwall. They came up with the name Wings after they had heard of a group in Sussex who wanted to be more vibrant and attract a wider audience. Wings stands for Womens Institute next generations.

Adding to the festive atmosphere, Members enjoyed a free glass of prosecco or non-alcoholic drink and Sue Hickman had created a beautiful anniversary cake which was enjoyed by all attending. A celebratory mug was given to the four people who have enjoyed continuous membership since 2016. First Paige in Malvern had the unique design printed on the mugs for the occasion.

Colwall Wings since its inception has met monthly at Colwall park Hotel and they are very grateful for the support that they have given them over the years.

The event was a fitting celebration of ten successful years for Colwall Wings WI, recognising the enthusiasm, commitment and community spirit that have helped the organisation flourish. Members reflected on the past decade with pride and looked forward to many more years of friendship, learning and support within the local community. For more information on Colwall Wings contact colwallwings@gmail.com.



LLANGROVE WI

Llangrove members attended the NAM watch party.



WI BRANCH NOTICES



"Wildlife in the Garden".

Tuesday, 14th July 2026

At

Risbury Village Hall

6.30 p.m.

Visitors £5 to include refreshments



**'Making a Beeline for the
Garden Gate'**

Janelle Quitman

**Herefordshire Bee Keeping
Association**

16th July Llangrove Village



SATURDAY 4TH JULY

INDIAN BLOCK PRINTING

BAG OR TEA TOWEL

MUNSLEY HALL

VISITORS £10

POST YOUR EVENTS HERE!



HFWI Events Please apply for tickets through your Secretary/Treasurer/Booking Person. (Associate members may book direct with the HFWI office). BACS or cheque payments shown on your bank statements will act as receipt of monies received by HFWI. Receipts will be issued for cash transactions. If the word 'non-members' is not printed on the application form, the event is for members only. If oversubscribed (too many applications for places received before the closing date), WI members have priority and a ballot may be held. Notification of cancellation or over-subscription will be sent to the Booking Person as soon as possible. If you can't attend, it is up to you to sell your ticket (as appropriate), no refunds are given unless the event cannot go ahead or is over-subscribed. Please note: All events except training are fundraisers for HFWI.

County Federation Events Calendar

JULY

AUGUST

SEPTEMBER

Friday 3rd - Round 1 - Annual Quiz

Friday 21st - Coffee & Chat - Ross Labels, HR9 7QJ

Wednesday 16th - WI DAY

Friday 10th - Final Annual Quiz

Saturday 18th - Coffee & Chat - Wellington Home & Gardens - A49 - Wellington - 10.30

WI Office Closed - 28th -30th

Castle Moat House

Sunday 26th July
11am - 4pm

Dilwyn, Hereford
HR4 8HZ

TICKETS:

Pre-booked: £6.00*

On the day: £7.50

Under 16s: Free

- Live Talk
- Refreshments available**

Parking available
Not wheelchair accessible
Dogs on leads welcome

* Bookings close: 12pm, 24th July
** Proceeds to be shared between St Michael's Hospice and Herefordshire WI

Experience the beauty and history of Castle Moat House.

Take a leisurely stroll through this captivating garden, combining a more formal cottage garden that envelops the house with a serene wild area featuring paths to a Medieval castle motte, a partially filled moat, and historic fish and fowl ponds. Steep banks and deep water add character and interest, while the garden provides a haven for wildlife and visitors alike.

Enjoy a talk from a local volunteer in historical costume about the medieval moat and motte. The garden blends natural beauty, history, and wildlife, offering a rich and engaging day out for all ages.





**HEREFORD GUILD
of
MAYOR'S GUIDES**

Established 1981

Bespoke Walks and Illustrated Talks

- *Historic City Tour
- *Monks and Friars
- *Women in Hereford
- *Alfred Watkins
- *Agriculture and Industry
- *Aethelflaed Lady of the Mercians
- *Building Hereford Through the Ages - architecture in the city centre
- *Hauntings and Horrors
- *Elgar in Hereford
- *The Rev. John Venn
- *Saxon Hereford
- *Hereford on the Wye
- *The Civil War

AVAILABLE ALL YEAR

For information and enquiries please visit
www.herefordguidedwalks.org.uk
Or contact bookings Officer 07947 924494

Flower Festival

“Art in Flowers”

Inspired by popular artists, more than 20 beautiful flower arrangements celebrating St. Michael, patron saint of artists at

Little Marcle Church HR8 2JZ
3rd-5th July 2026 - From 10am – 4pm

Admission £5 - under 16s free



Tea, coffee, cold drinks and homemade cakes
Enquiries: Chris Lynch 07794 934091 -
Chris.lynch54@btinternet.com



Unable to attend but wish to support?
Make a donation with **JustGiving**
Scan to donate

TAPESTRY CANVASES

Beautifully stretched and made into cushions, bell-pulls, rugs, etc.
Cheltenham 01242 233883

RATES FOR ADVERTISING IN THE HFWI NEWSLETTER & HFWI SOCIAL MEDIA

The Board of Trustees have decided to issue the following rates for adverts placed in the eNewsletter. Once an advert payment is secure the advertisement can be placed in HFWI Facebook and website pages.

One Pin Board page, for free, 20-word max, items from Federation WIs about their events. Other advertising:

Page	WI	Charity	Commercial
¼	£0	£7	£9
½	£0	£10	£18
Full	£0	£22	£36

Contact details: Rosi Taylor

(rosi.taylor54@googlemail.com, 07821 197219)

Please note that your contributions for the eNewsletter should be with admin@herefordshirewi.org.uk